

ITEM 37. PARKING – NO PARKING – WENTWORTH PARK ROAD GLEBE

TRIM RECORD NO: 2018/014807

RECOMMENDATION

It is recommended that the Committee endorse the reallocation of parking on the eastern side of Wentworth Park Road, Glebe, between the points 34.7 metres and 59.7 metres (four car spaces) north of Mitchell Street as “No Parking”.

VOTING MEMBERS FOR THIS ITEM

<i>Voting Members</i>	<i>Support</i>	<i>Object</i>
City of Sydney		
Roads and Maritime Services		
NSW Police – Leichhardt LAC		
Representative for the Member for Balmain		

DECISION

BACKGROUND

NSW Greyhound Breeders, Owners and Trainer’s Association has requested consideration to introduce parking to pick-up and drop-off passengers adjacent to Wentworth Park.

COMMENTS

The kerb space on the eastern side of Wentworth Park Road, Glebe, between St Johns Road and Mitchell Street, is currently signposted as “No Stopping”, “2P 8am-6pm, Mon-Fri” and “4P 6pm-10pm, Mon-Fri”. 35 metres of kerb space is signposted as “No Stopping” south of the raised marked pedestrian crossing near St Johns Road.

To allow pick-up and drop-off to Wentworth Park, it is proposed to reallocate 25 metres of kerbspace 10 metres away from the pedestrian crossing from “No Stopping” to “No Parking”.

The change would allow drivers to pick-up and drop-off passengers and goods provided the vehicle stops for no more than two minutes, and provided the driver remains within three metres of their vehicle.

CONSULTATION

The City notified local residents and businesses in the area. There were 171 letters sent out with no responses supporting or opposing the proposal.

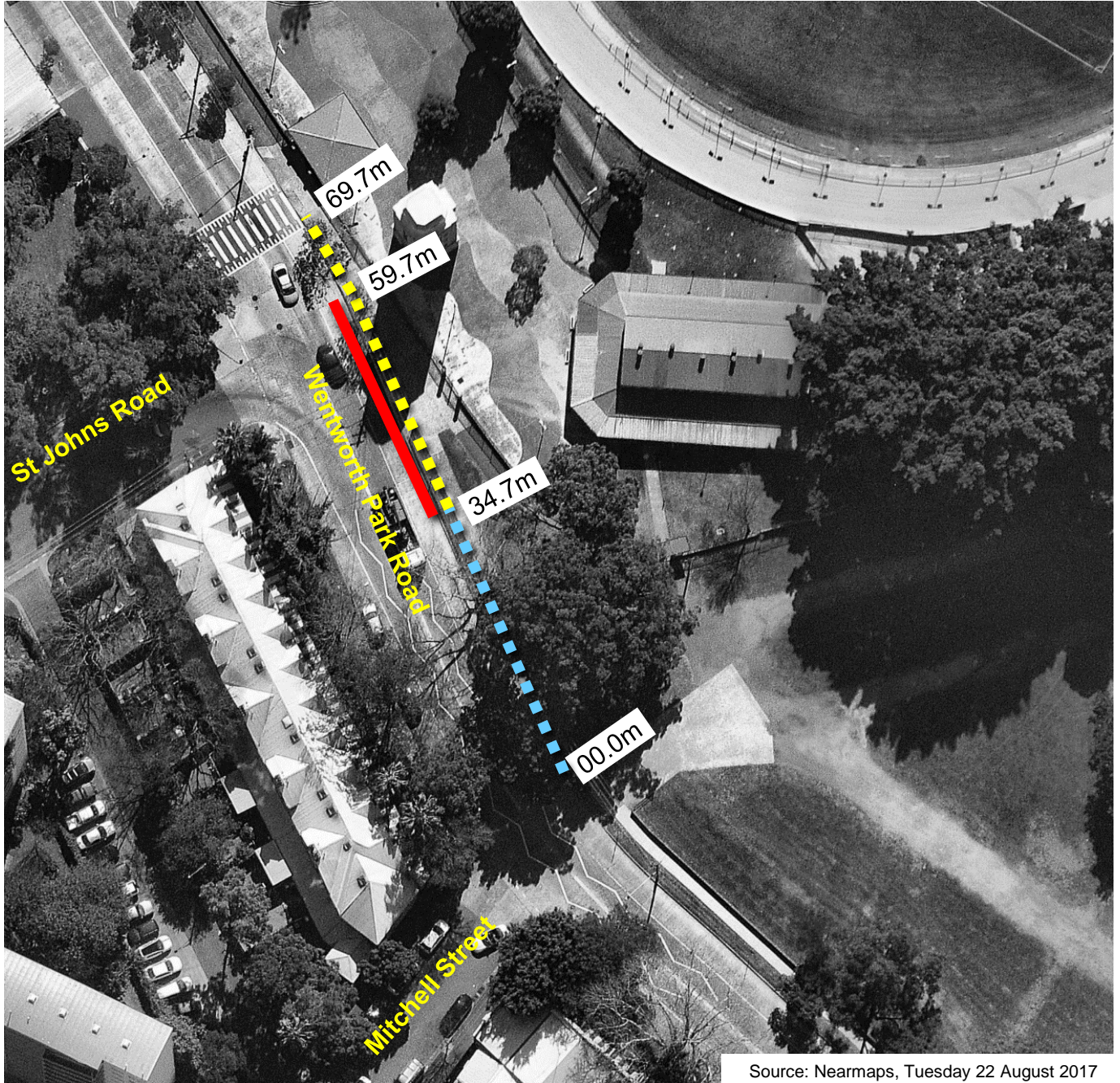
FINANCIAL

Funds are available in the current budget.

Parking – No Parking – Wentworth Parking Road Glebe


Tony Ly, Engineering Traffic Officer


Wentworth Park Road, Glebe Parking Changes



Source: Nearmaps, Tuesday 22 August 2017

Existing

 "No Stopping"

 "2P 8am-6pm, Mon-Fri" and
"4P 6pm-10pm, Mon-Fri"

Proposed

 "No Parking"

